

# SLOUGH MULTIFUEL EXTENSION PROJECT

[PINS Ref: EN010129]

## Drawings and Plans

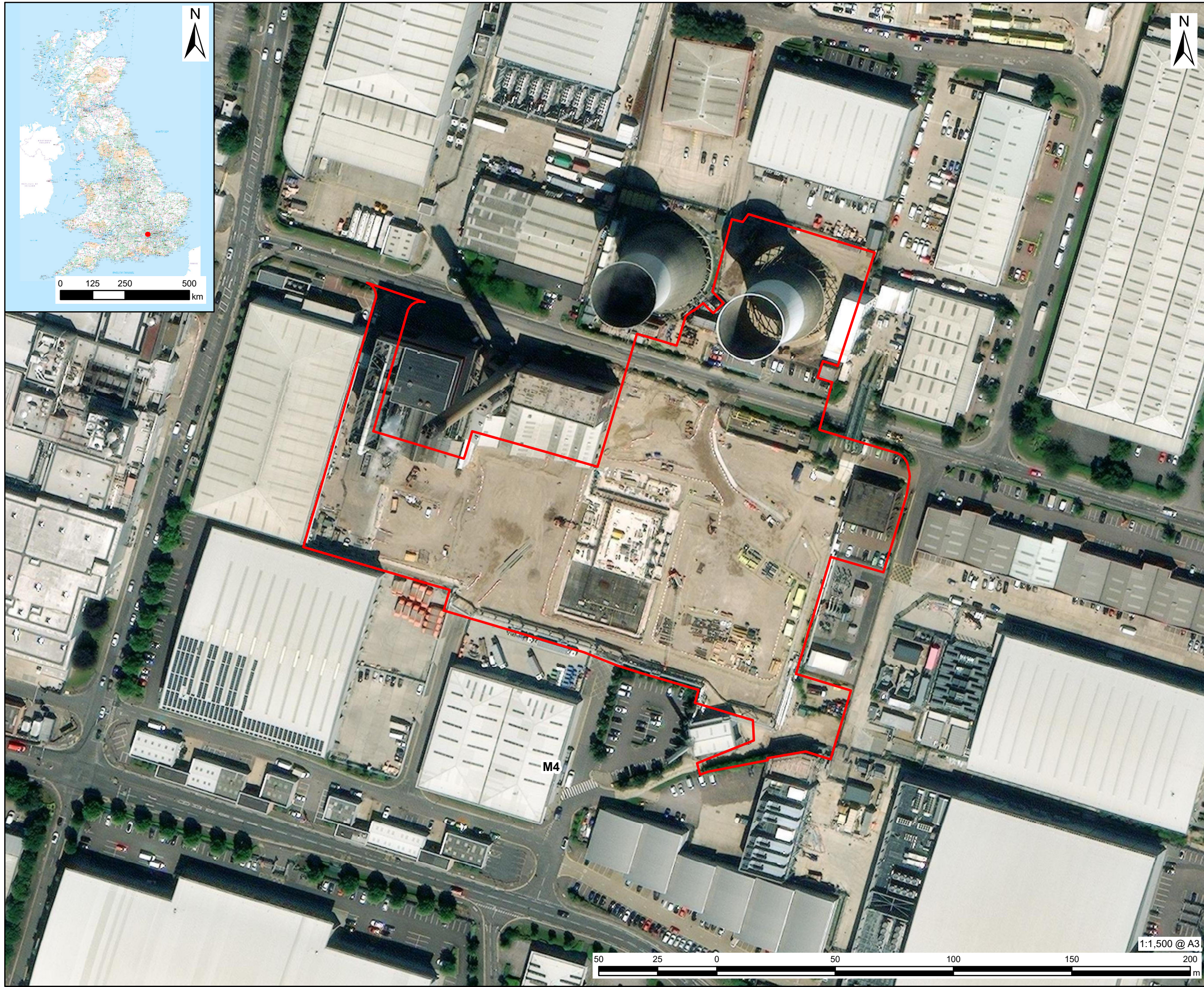
### Site Location Plan

Application Document Reference: [4.1]

APFP Regulations 5(2)(o)

Revision Number: 1.0

Planning Act 2008  
Infrastructure Planning (Applications: Prescribed  
Forms and Procedure) Regulations 2009



SSE Slough Multifuel

3rd Floor, Portwall Place  
 Portwall Lane  
 Bristol  
 BS1 6NA  
 aecom.com

Proposed Project Site Boundary

**NOTES**

Service Layer Credits: Source: Esri, Maxar, Earthstar Geographics, and the GIS User Community  
 Reproduced from Ordnance Survey digital map data © Crown copyright [2022]. All rights reserved. Licence number 0100031673.  
 Date of Aerial: 16/07/2021

**ISSUE PURPOSE**

Environmental Statement  
 APFP Regulation 5(2)(o)

**PINS REFERENCE NO.**

EN010129

**FIGURE TITLE**

Site Location Plan

**FIGURE NUMBER**

Figure 4.1

This drawing has been prepared for the use of AECOM's client. It may not be used, modified, reproduced or relied upon by third parties, except as agreed by AECOM or as required by law. AECOM accepts no responsibility, and denies any liability whatsoever, to any party that uses or relies on this drawing without AECOM's express written consent. Do not scale this document. All measurements must be obtained from the stated dimensions.